

an efficient and reliable pump engineered to perform

HORIZONTAL SPLIT CASE PUMPS



GRW PUMPS

An ISO 9001 : 2008 and ISO 14001 : 2004 Certified Company

GRW PUMPS is an ISO 9001 : 2008 certified company offering wide range of high quality Centrifugal and Positive Displacement pumps. Its factory is located at Domjur, near Kolkata and is well equipped with most modern machines including an advanced Hydraulic Test Bed for performance testing of pumps offered. Its R & D cell is constantly endeavouring to develop new models and improve existing pump designs. It employs skilled engineers who are well experienced in manufacturing of pumps.

HORIZONTAL SPLIT CASE PUMPS

The Horizontal Split Case Pumps offered are energy efficient, high in mechanical reliability, silent in operation and compact in design to provide long trouble free service in operation.

APPLICATION

- Water Supply
- Irrigation
- Building Services
- Fire Fighting
- Mine Dewatering
- Various application in Steel, Sugar, Paper, Textile, Petrochemical & other plants.

RANGE

- Capacity: Upto 12000 m³/hr
- Head : Upto 200 mtrs

MATERIALS

- C.I, DI, SS, NiResist, NiCl, Duplex, Bronze etc.

PUMPS

Description :

Horizontal, axially split casing, single or double stage, single or double suction, low NPSH with rotating assembly accessible by removing upper half casing without disturbing suction and delivery piping or drive motor. These axially split casing pumps are also available in vertical execution.

Casing :

Axially split volute type with suction and discharge nozzle integrally cast with lower half casing.

Impeller :

Single or double suction type duly balanced.

Shaft :

Accurately machined and precision ground.

Shaft Sealing :

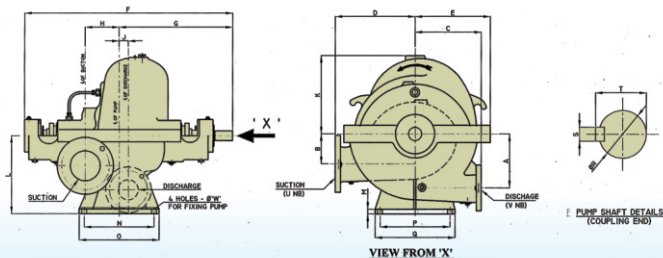
By gland packing or mechanical seal

Bearings :

Grease lubricated antifriction bearings. Oil lubricated bearings available in special cases.

Drive :

Electric motors or diesel engines.

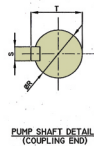
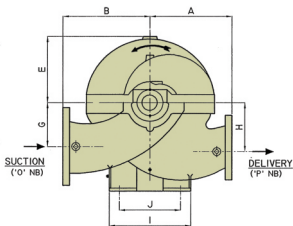
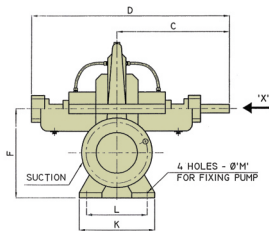


DOUBLE STAGE PUMP

All dimensions are in millimetre

PUMP MODEL	A	B	C	D	E	F	G	H	J	K	L	M	N	O	P	Q	R	S	T	U	V	W
HS 80X50 - 222/2	140	105	-	238	197	640	349	89	32	310	310	22	242	298	190	260	24.6	6.3	26.5	80	50	19
HS 80X50 - 322/2	200	145	-	300	280	726	389	80	28	350	390	24	250	300	250	320	35	10	37.2	80	50	19
HS 125X80 - 400/2	240	160	333	340	310	390	510	125	31	350	350	24	310	360	310	380	40	10	41.3	125	80	22
HS 150X100 - 366/2	230	150	321	380	333	1040	566	155	40	350	350	24	350	400	350	400	50	14	51.5	150	100	22
HS 150X100 - 436/2	270	150	330	400	375	1040	566	170	46	392	390	24	350	400	350	400	50	14	51.5	150	100	22
HS 200X150 - 460/2	310	310	400	550	434	1126	622	214	64	495	500	24	480	530	480	530	65	16	58.8	200	150	22

Note : Dimensions shown are indicative



SINGLE STAGE PUMP

All dimensions are in millimetre

PUMP MODEL	A	B	C	D	E	F	G	H	I	J	K	L	M	N	O	P
HS 125 X 80 - 305	213	267	371	679	210	292	146	184	254	178	254	184	16	25	125	380
HS 150 X 100 - 305	229	279	375	686	222	330	162	197	254	178	254	184	16	25	150	380
HS 150 X 100 - 356	318	305	432	762	248	330	162	194	356	267	330	264	20	28.6	150	400
HS 150 X 125 - 254	241	330	375	686	-	-	165	178	-	-	-	-	20	25	150	400
HS 200 X 150 - 337	279	356	489	864	-	-	191	229	-	-	-	-	20	38.1	200	530
SH 200 X 150 - 400	356	381	489	864	292	394	194	216	356	267	330	264	20	38.1	200	530
SH 250 X 150 - 457	318	432	553	991	330	457	229	267	457	343	406	343	22	54	250	530
HS 250 X 200 - 356	292	432	489	864	273	457	225	254	356	267	330	264	20	38.1	250	530
HS 300 X 250 - 400	356	457	553	991	318	533	267	267	457	343	406	343	22	54	300	530
HS 450 X 300 - 635	533	629	775	1368	480	737	368	457	711	584	610	533	24	82.5	450	530
HS 300 X 200 - 463	419	559	664	1204	325	457	134	279	572	457	660	533	28	57.15	300	200
HS 350 X 200 - 570	508	560	760	1338	365	552	170	378	635	520	670	500	30	80	350	200
HS 350 X 200 - 730	450	620	760	1335	463	640	170	440	635	520	650	580	32	80	350	200
HS 300 X 250 - 454	483	533	570	1199	354	495	140	318	635	508	533	635	32	54	300	250
HS 350 X 250 - 590	522	706	821	1450	411	572	170	353	736	584	580	736	32	80	350	250
HS 350 X 250 - 670	495	675	760	1335	510	650	170	445	740	610	580	740	32	80	350	250
HS 350 X 200 - 385	420	535	630	1120	340	525	140	334	620	520	620	510	24	50	350	300
HS 400 X 300 - 460	533	610	733	1117	356	584	158	356	737	610	584	737	20	57.15	400	300
HS 400 X 300 - 540	572	724	806	1433	425	622	180	381	737	610	584	737	30	68.85	400	300
HS 400 X 350 - 475	500	700	700	1260	440	700	140	410	700	570	700	560	35	57	400	350
HS 500 X 400 - 610	670	840	987	1718	527	820	180	507	1030	880	860	710	32	82.55	500	400
HS 600 X 400 - 910	813	865	995	1765	660	927	225	560	1216	1016	1096	1016	42	114.3	600	400
HS 700 X 500 - 615	750	800	1030	1790	630	970	230	550	1240	1040	1000	860	42	90	700	500
HS 600 X 500 - 743	813	940	1008	1798	580	902	190	545	962	762	1014	914	35	100	600	500
HS 750 X 600 - 770	875	1150	1156	2127	705	1190	180	700	1190	970	1190	970	39	105	750	600
HS 750 X 750 - 686	810	1116	107	2068	810	1162	190	682	1080	840	1470	-	35	94	750	750
HS 900 X 750 - 1067	1220	1320	1256	2240	825	1320	272	812	1676	-	1470	-	42	139.7	900	750

Note : Dimensions shown are indicative



Some Other Products



Vertical Turbine Pump

Capacity : upto 12000 m³/hr
Head : upto 200m



Horizontal Multi Stage Pump

Capacity : upto 700m³/hr
Head : upto 250m



End Suction Back Pullout Pump

Capacity : upto 550m³/hr
Head : upto 100m



Horizontal Mixed Flow Pump

Capacity : upto 3500m³/hr
Head : upto 45m



Vertical Sump pump

Capacity : upto 750m³/hr
Head : upto 90m



Vertical Multi Stage Pump

Capacity : upto 90m³/hr
Head : upto 290m



Single Screw Pump

Capacity : upto 120m³/hr
Head : upto 260m



Twin / Tripple Screw Pump

Capacity : upto 750m³/hr
Head : upto 54m



Gear Pump

Capacity : upto 120m³/hr
Head : upto 100m



Horizontal Slurry Pump

Capacity : upto 1300m³/hr
Head : upto 65m

Authorised Dealer :

Every Pumping Solution Made Simple

GRW PUMPS PVT.LTD.

An ISO-9001 : 2008 and ISO-14001 : 2004 Certified Company



Head Office :

Flat No. C-2, 3rd Floor

12 Vivekananda Road

Kolkata 700075, India

Ph. No. +91 33 65333762, 24995509

e-mail : sales@grwpumps.com

accounts@grwpumps.com

service@grwpumps.com

grw12pumps@gmail.com

www.grwpumps.com

Works :

Madhya Santoshpur

P.O. Dakshin Santoshpur

P.S. Jagatballavpur

Howrah 711404

West Bengal

Ph. No. +91 3214 201673

e-mail : factory@grwpumps.com

factory1.grwpumps@gmail.com